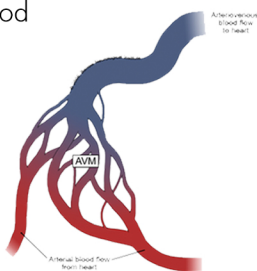


WHAT IS AN AVM?

An arteriovenous malformation (AVM) is a tangle of abnormal and poorly formed blood vessels in the brain that directly divert blood from the arteries to the veins. AVMs occur in <1% of the population, about one in every 200-500 are thought to be due to abnormal development of blood vessels in utero and may be present since birth.

SYMPTOMS MAY INCLUDE:

- Seizures
- Headache
- Bleeding and stroke-like symptoms (weakness, paralysis, numbness, tingling, vision, balance and hearing problems)
- Bleeding



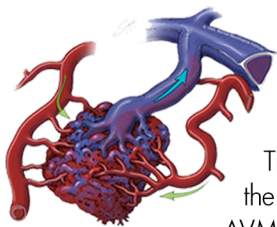
HOW ARE THEY DIAGNOSED?

Most AVMs are detected with a computed tomography (CT) brain scan, a magnetic resonance imaging (MRI) brain scan or a cerebral angiogram.

Treatment is offered to try and prevent bleeding from the AVM.

Your doctor will recommend the best treatment for you.

This will be determined by the size and location of the AVM.



**JOE NIEKRO
FOUNDATION**

WWW.JOENIEKROFOUNDATION.COM
281-543-5251

JOE NIEKRO FOUNDATION
2401 FOUNTAIN VIEW DR
STE 312 PMB 12
HOUSTON, TX 77057