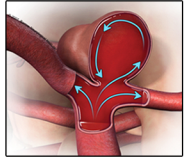


COMMON ANEURYSM SUBTYPES

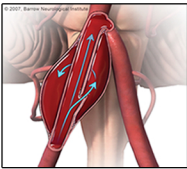
Saccular

The “saccular” or “berry” is the most common type of aneurysm and looks like a sac or berry sticking out of the side of a blood vessel wall.

Most have a “neck”, although sometimes a neck cannot be readily defined, even at the time of surgery.



Fusiform

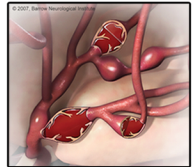


The “fusiform” (dissecting) aneurysm is expanded in all directions. These aneurysms form from injuries to the innermost layers of the blood vessel, such as a traumatic injury or from

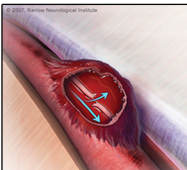
atherosclerotic (fatty) plaque. Fusiform aneurysms don’t have a “neck” region and they seldom rupture.

Mycotic

The “mycotic” or “infectious” aneurysm is very rare. This saccular-like aneurysm arises from an artery that has been affected by an infection in the body and then spread to the brain through the blood stream.



Pseudo



A false or “pseudo-aneurysm” is an expansion of a blood vessel wall that does not involve all layers of the wall.

Most commonly, pseudo aneurysms involve the outermost layers of the brain artery only, and usually follow injury of tearing of the vessel wall.



**JOE NIEKRO
FOUNDATION**

WWW.JOENIEKROFOUNDATION.COM
281-543-5251

JOE NIEKRO FOUNDATION
2401 FOUNTAIN VIEW DR
STE 312 PMB 12
HOUSTON, TX 77057